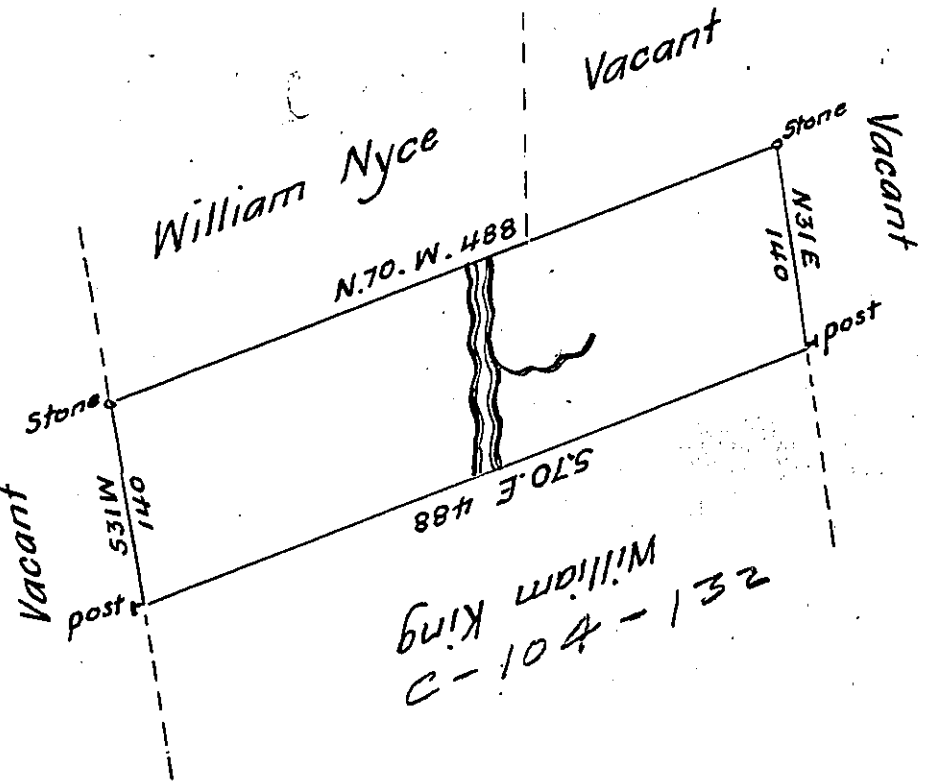


Letiman - PIKE

(Upside Down)



By Virtue of a warrant dated the 28<sup>th</sup> September 1786 Surveyed the  
 20 September 1787 to William Wood the above described tract of land Situate  
 on the head branch of Thomas Swartwood's Mill Creek in Lower Smithfield  
 Township in the County of Northampton Containing Three hundred and  
 ninety-five acres fifty five perches & the allowance of Six  $\frac{1}{2}$  Cent & c<sup>a</sup>.  
 To Daniel Brodhead Esq<sup>r</sup>.  $\frac{1}{2}$  Geo. Palmer D.S.  
 Surveyor General.

IN TESTIMONY that the above is a copy of the original remaining on file in  
 the Department of Internal Affairs of Pennsylvania, made  
 conformably to an Act of Assembly approved the 16th day of  
 February, 1833, I have hereunto set my Hand and caused  
 the Seal of said Department to be affixed at Harrisburg,  
 this twenty-second day of August 1907

*Henry Howell*  
 Secretary of Internal Affairs.